



MONTHLY MEMBERSHIP PROGRESS REPORT

District 5M 4

Results as of: 06/30/2018

GMT: MICHAEL MOLENDIA

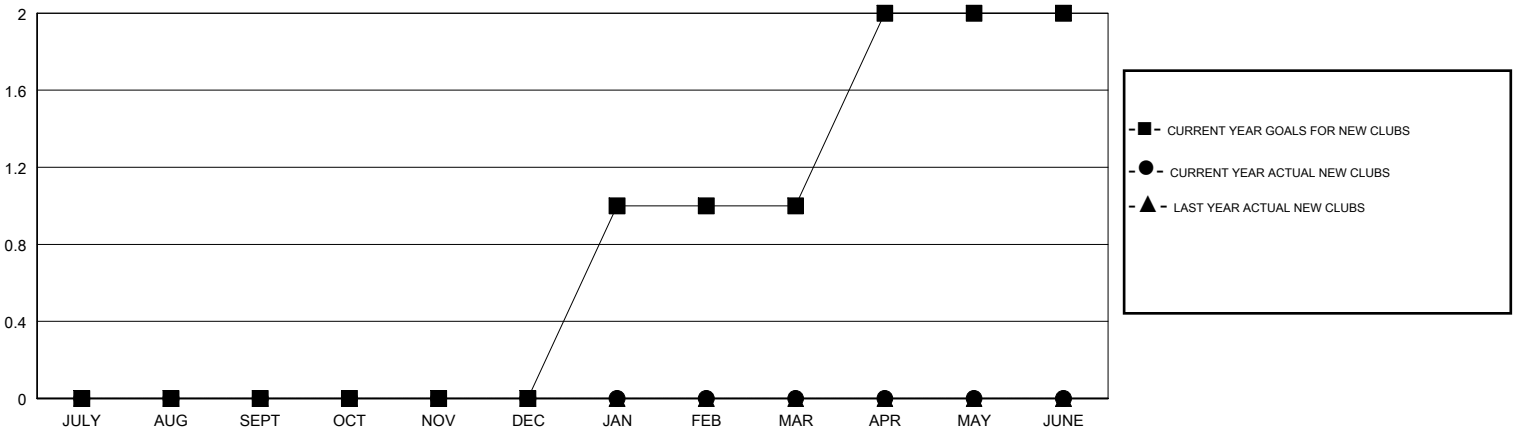
LOCATION MINNESOTA

GMT CA

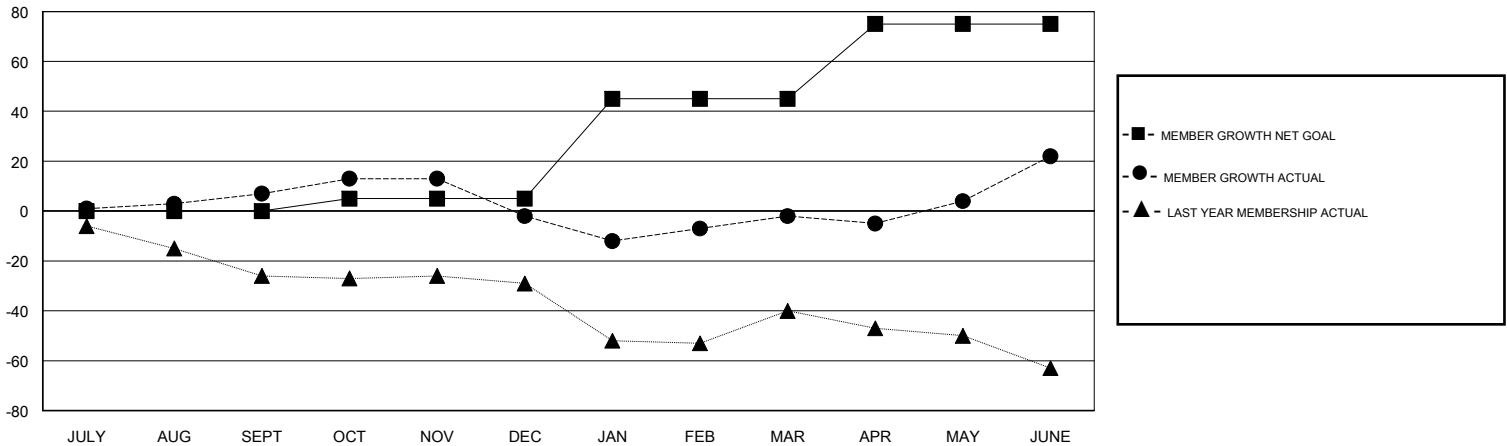
Clubs			
RESULTS FOR 2017-2018			
QUARTER	NEW CLUB GOAL	NEW CLUBS	DROPPED CLUBS
JULY/AUG/SEPT	0	0	0
OCT/NOV/DEC	0	0	1
JAN/FEB/MAR	1	0	0
APR/MAY/JUNE	1	0	0

Members			
RESULTS FOR 2017-2018			
QUARTER	MEMBER GROWTH NET GOAL	MEMBER GROWTH ACTUAL	DROPPED MEMBERS ACTUAL (including transfers)
JULY/AUG/SEPT	0	30	20
OCT/NOV/DEC	5	41	50
JAN/FEB/MAR	40	39	35
APR/MAY/JUNE	30	65	36

GOALS AND ACTUAL NEW CLUBS CUMULATIVE



GOALS AND ACTUAL MEMBERS CUMULATIVE



DROPPED CLUBS: 1

38 CLUBS OF 56 ADDED 1 OR MORE NEW MEMBERS

GENDER DISTRIBUTION	
MALE	1,161 (74.19%)
FEMALE	404 (25.81%)
Women Percentage Fiscal Year Goal: 29%	

DROPPED MEMBERS	
DECEASED	27
CLUB CANCELLED	0
OTHER	114
TOTAL	141

[CLICK HERE FOR CUMULATIVE MEMBERSHIP DATA](#)

TOTAL FAMILY UNIT MEMBERS	0
FAMILY MEMBERS PAYING HALF DUES	0